

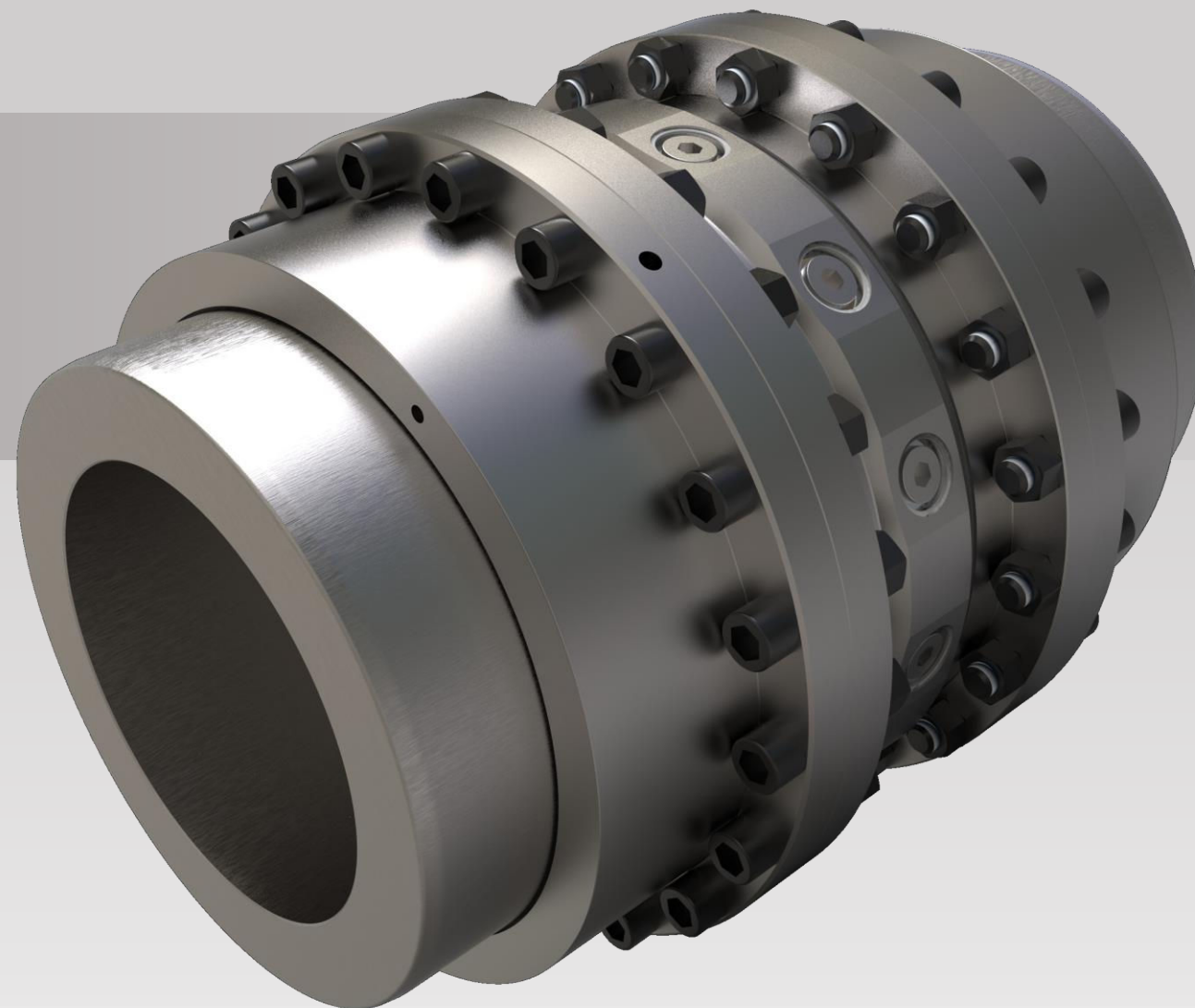


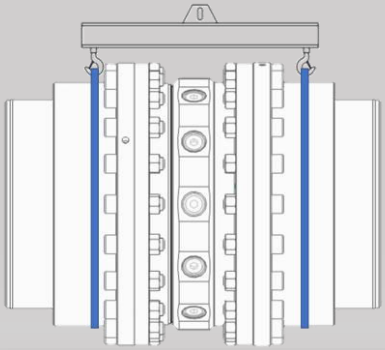
Gears Expert

INSTALLATION AND MAINTENANCE INSTRUCTIONS

Shear Pins Torque Limiter

K₇TL^P





Lifting of the coupling

Lifting must be carried out using the holes provided for this purpose or in cradle lifting around the shear pins module

Lift in accordance with local regulations



Protective guard

Install a protective guard around all rotating parts

Design in line with local regulations (ISO14120 recommended as a standard)



Locking ring

Check periodically that every locking ring is correctly assembled



Caution ! Poor fixing of the locking rings can lead to flying fragments



Recycling

Shear pins are made of recyclable material (steel)

Please make sure to recycle the broken parts in accordance with local regulations

INSTALLATION AND MAINTENANCE INSTRUCTIONS

□ Assembling

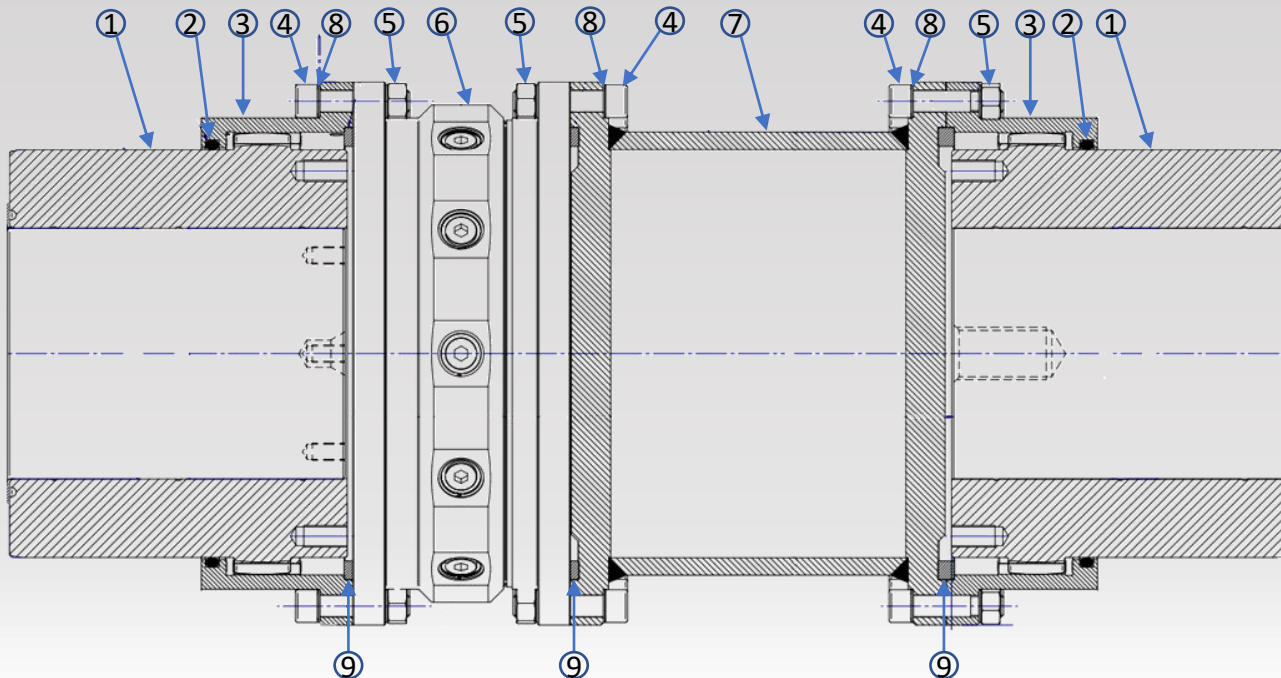
To assemble the coupling, refer to the installation instructions of the couplings.

The shear pins module is delivered already set.

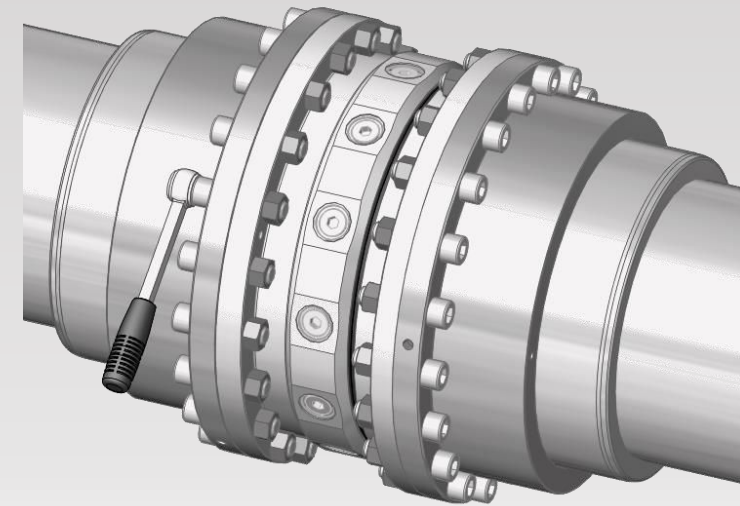
Add the shear pin module radially in between the coupling flanges.

The flanged sleeves being secured by uniform tightening of the fasteners to the torque values “Cs” indicated in table below :

SENIOR	50	68	80	100	115	135	150	170	190	215	230	250	280	310	330	370	400	430	475	510	550	610	650	710	750	800
Cs (Nm)	14	33	60	60	95	171	235	235	370	370	520	520	520	800	1250	1650	1650	1650	2290	2290	4600	4600	8000	8000	9000	9500



1. Hub
2. O-Ring
3. Flange
4. Bolt
5. Nut
6. Shear pin module
7. Spacer (optional)
8. Washer
9. Centering ring



Pin replacement

❑ Disassembly process

Before proceeding with disassembly, make sure to:

- Secure installation
- Remove the safety guard
- Clean roughly the outer surfaces

Align marks

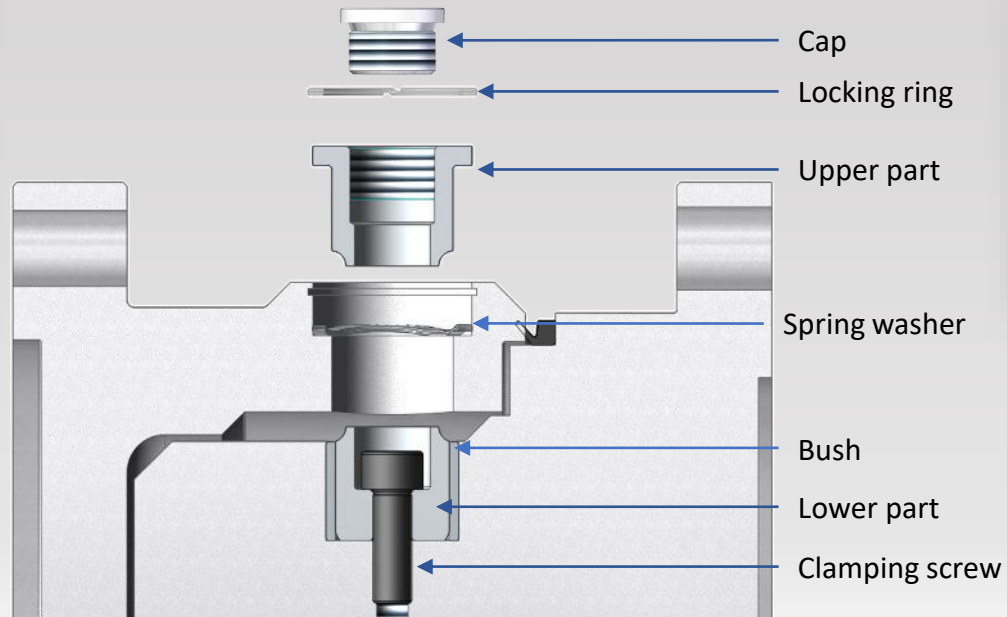


Marks

Remove the locking ring



Extract the upper part of the pin



Disassemble the clamping screws

Extract the lower part of the pin



Clean the module slots

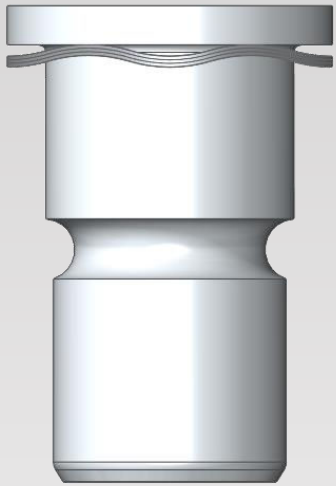
Pin replacement

❑ Assembly process

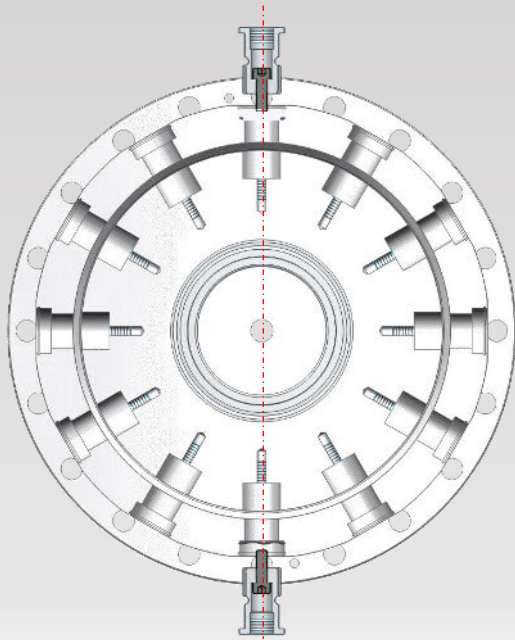
Before proceeding with assembly, make sure that:

- housings are cleaned
- bushes are in place
- marks are aligned

Fit spring washers
on pins



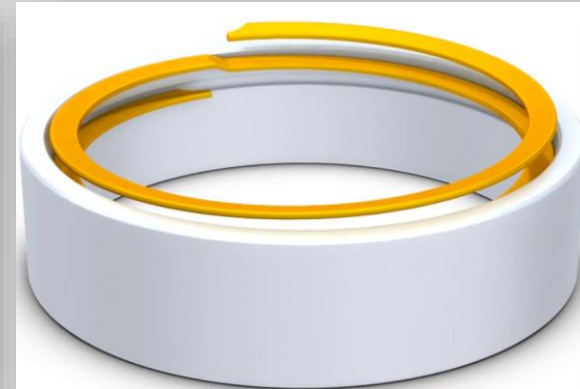
Insert pins facing
one another



Tighten the
clamping screws
38 N.m using
threadlocker



Assemble the
locking rings

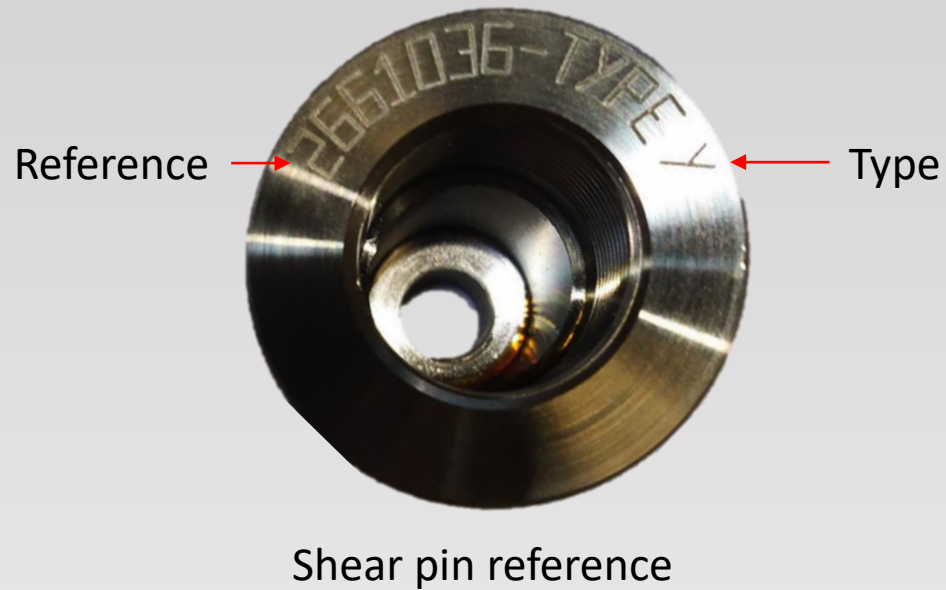


Screw the cap with
threadlocker



For the spare parts, please contact CMDgears and indicate the coupling model and size.

- For shear pins replacement, indicate the reference and the type marked on the upper part
- For other part replacement, identify each component in accordance with parts list detailed previously



CMDgears contact